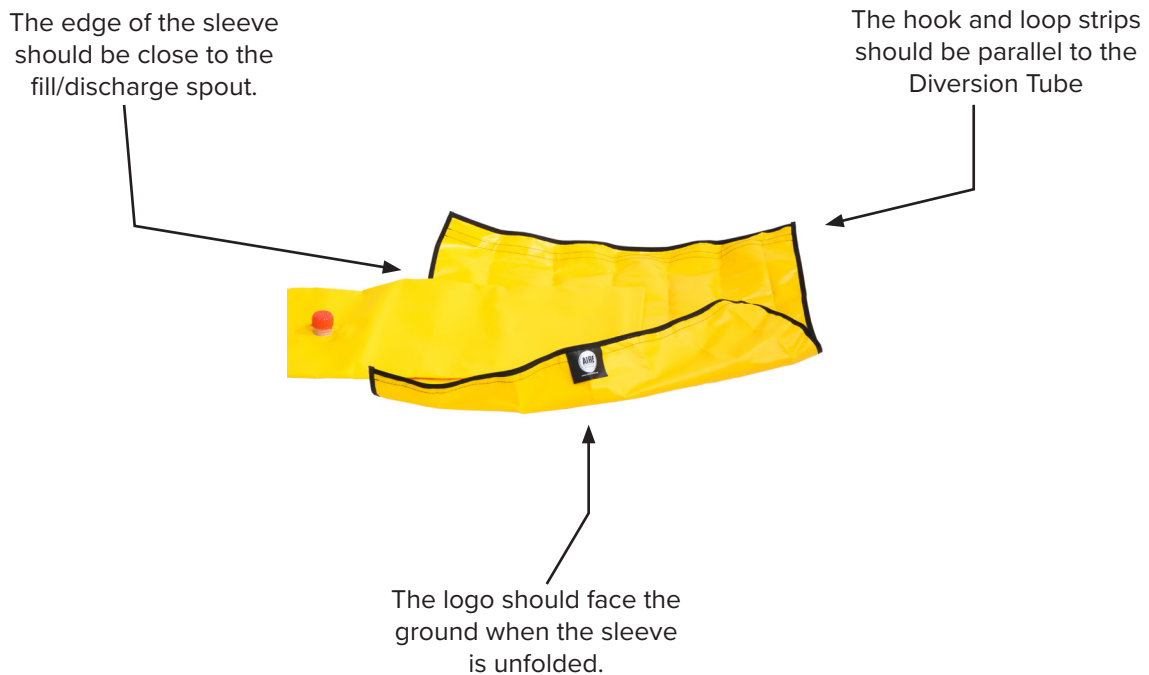


# CONNECTOR SLEEVE INSTRUCTIONS

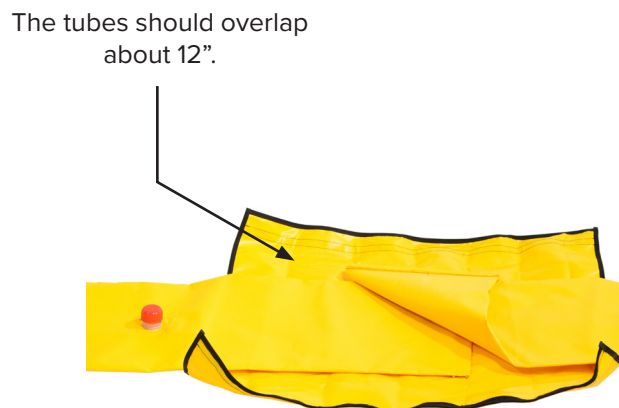
When protecting a large area, one Diversion Tube may not be long enough. Diversion Tube Connector Sleeves are used to connect Diversion Tubes together, enabling you to create a longer continuous barrier.

## INSTALLATION

1. Place the Diversion Tube Connector Sleeve under the end of a previously installed Diversion Tube.

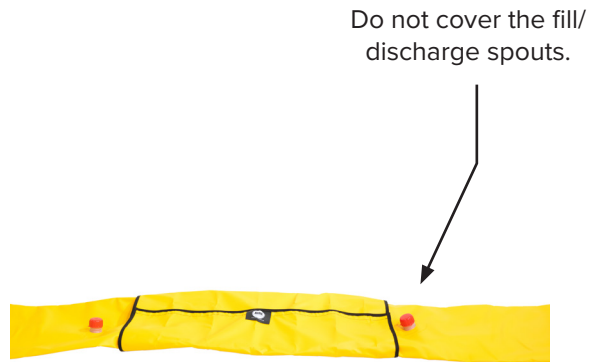


2. Place the next Diversion Tube on top of the first, overlapping them by approximately 12”.



## CONTINUED

3. Secure the Connector Sleeve's hook and loop strips.



4. After securing the hook and loop strips, Fill each tube. Watch the connector sleeve to ensure the hook and loop strips remain secure.

Need a custom size, color or design? Call (800) 247-3846.

