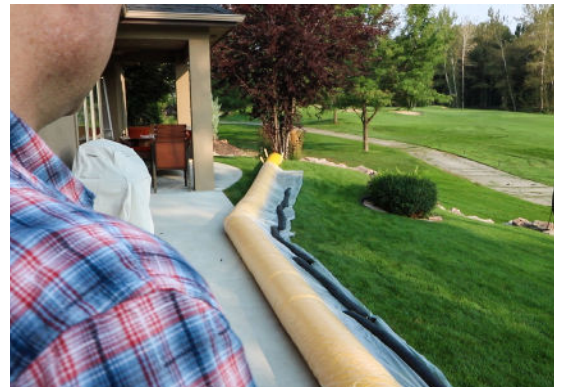


FILL ADAPTER INSTRUCTIONS

The Diversion Tube Fill Adapter enables you to connect a garden hose directly to your Diversion Tube(s). This direct connection makes filling Diversion Tubes easier and helps them achieve full loft. That being said, Diversion Tubes are not meant to be pressurized. They should remain pliable when full.

INSTALLATION

1. Attach the black threaded portion of the Fill Adapter to a garden hose.
2. Attach the red threaded portion of the Fill Adapter to the fill/discharge spout on the Diversion Tube.
3. Make sure the valve is open.
4. Turn on the hose to start filling the Diversion Tube.
(Caution: Pressure can build when using the Fill Adapter. Be sure the Diversion Tube is monitored while filling.)
5. As the Diversion Tube Fills, occasionally open the opposite fill/discharge spout slightly to purge any air.
6. When the Diversion Tube has achieved full loft, turn off the Fill Adapter's valve so that water doesn't backflow into the hose.
7. At this point you can either leave the Fill Adapter as it is, or unscrew it and replace it with the original red cap.
(Caution: water will spout out of the Diversion Tube when uncapped.)



Need a custom size, color or design? Call (800) 247-3846.

